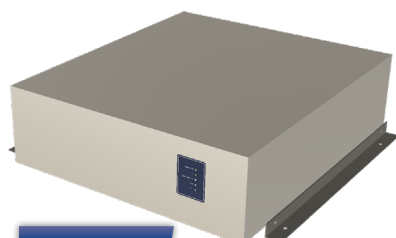


POWER-BOOST

SINGLE - PHASE [SS]

BASIC



Plate



Rack 19"



Power	1.5 kVA	3 kVA	5 kVA	7.5 kVA
Transformer	Standard autotransformer - Optional isolation transformer			
Full Load Efficiency	> 93%			
VOLTAGE (plate - only remote control)				
Input Range [PH-N]	190 - 267 Vac			
Output Ranges and Switch Mode [PH-N]	LOW 2-150Vac / HIGH 4-300Vac Manual Switch LOW/HIGH through control panel (Rack) or remote interface (Plate)			
Regulation System [PH-N]	Only Rack - Local [Potentiometer]: 125Vac ± 25Vac and 250Vac ± 50Vac Plate and Rack - Remote [Interfaces]: 2-150Vac and 4-300Vac			
Sensing	Yes - (Maximum Voltage Drop 5%)			
Total Harmonic Distortion (THD)	< 1%			
Static Line Regulation	< 1%			
Static Load Regulation	< 1%			
Dynamic stability of the output voltage upon load variation	< 0.5%			
Time Response to load or line variation	< 1 ms			
CURRENT (plate - only remote control)				
Max Current Setup	-			
Regulation Function	-			
RMS at 150Vac and 300Vac	10 A - 5 A	20 A - 10 A	33,3 A - 16,6 A	50 A - 25 A
Inrush at 150Vac and 300Vac [6s]	15 A - 7,5 A	30 A - 15 A	50 A - 25 A	75 A - 37,5 A
FREQUENCY (plate - only remote control)				
Input Range	47Hz - 63Hz			
Output (switchable)	50Hz and 60 Hz [± 0,001%]			
Additional Output Value (switchable)	-			
Regulation Function (adjustable)	-			

Power	1.5 kVA	3 kVA	5 kVA	7.5 kVA
PHASES				
Offset Modulation	-			
OTHERS				
Crest factor	04:01			
Noise level	60dBA			
Power Protections	OVP, UVP, OCP, OTP			
CONTROL PANEL (plate - only remote control)				
LCD Display	Plate - Only LED indicators Rack - [2 x 16 characters]			
Voltage and current LCD Display accuracy	± 2 DIGIT			
Voltage and current LCD Display resolution	± 0.1			
Cos φ value visualization	-			
Frequency value visualization	-			
7" LCD Touch Control Panel	-			
COMMUNICATION INTERFACES				
0-10Vdc	Standard [Accuracy Response ± 1%]			
Serial Port RS232	RS232 or Ethernet. No both at the same time.			
Ethernet Port				
Communication Protocols	SCPI and LabView Drivers			
Reference Voltage of remote controls	Common ground with ground line			
MECHANICAL (auto transformer / isolation transformer)				
Plate Dimensions (L x H x D)	420 x 132,5 x 500 mm	[420 x 132,5 x 500 mm] / [420 x 132,5 x 500 mm]	[420 x 132,5 x 500 mm] / [420 x 132,5 x 500 mm]	[420 x 132,5 x 500 mm] / [420 x 132,5 x 500 mm]
Plate Weight	14 / 21 kg	18 / 27 kg	22 / 31 kg	29 / 44 kg
Rack 19" Dimensions	3U D540 including 40mm handles	[3U D540] / [6U D540]	[3U D540] / [6U D540]	[3U D540] / [6U D540]
Rack 19" Weight	14 / 21 kg	18 / 27 kg	22 / 31 kg	29 / 44 kg
Tower Dimensions (L x H x D)	-	-	-	-
Tower Weight	-	-	-	-
ENVIRONMENTAL				
Cooling	Forced Circulation			
Operating Temperature	from 0° to +40°C			
Storage Temperature	from -40° to +85°C			
REGULATORY				
Safety & EMC	CEI EN 62040-1, EN 62040-2, EN62040-3, EN 60950-1:2007-02			